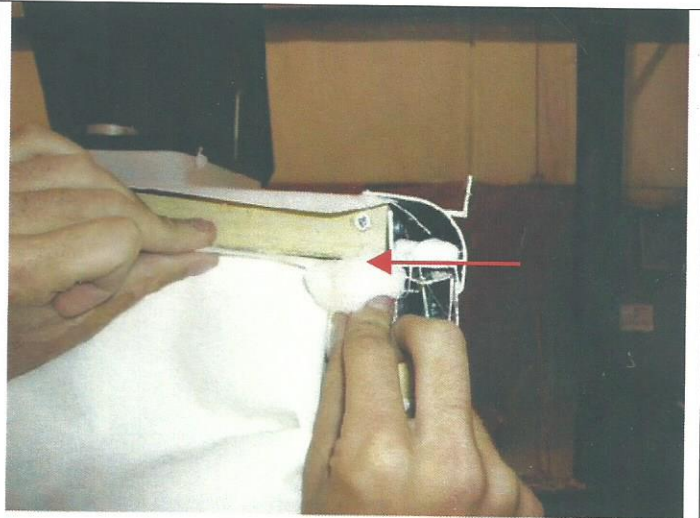
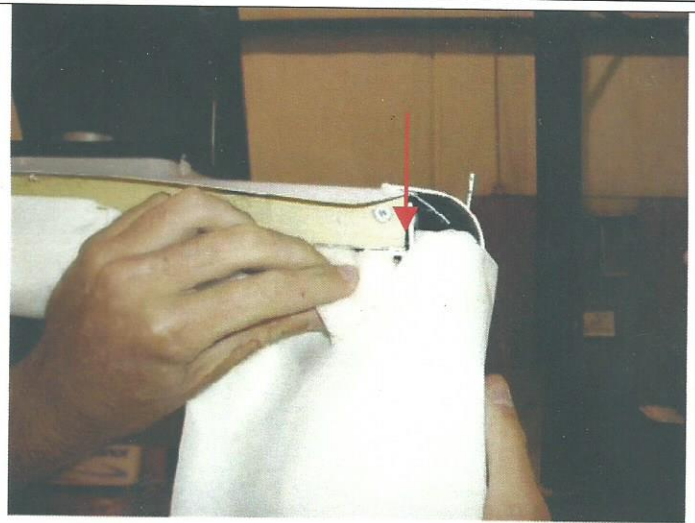


## **TrailManor Work Procedures**

### **Completing the Rear Seal on the Front Roof**

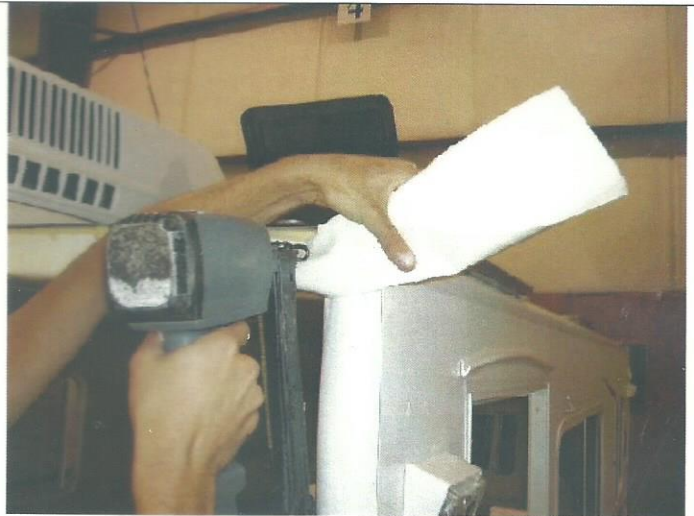
1. Trim the foam pieces extending from the seal at the rear of the roof (right and left sides of the seal) so that they end flush with the inside of the upper side walls (USWs).
2. Trim the foam pieces extending from the top of the seals on both USWs so that they end flush with the ceiling on the roof.
3. Pull the top end of the seal on the side wall up and staple it to the end of the frame on the roof and sidewall with a **N10BAB staple gun**. Repeat on the opposite corner of the roof.



## TrailManor Work Procedures

### Completing the Rear Seal on the Front Roof

4. Pull the door side (DS) end of the seal on the roof frame out past the side wall and staple it to the end of the frame on the roof and side wall with a **N10BAB staple gun**. Repeat for the off door side (ODS) end of the seal.





## **TrailManor Work Procedures**

### **Completing the Rear Seal on the Front Roof**

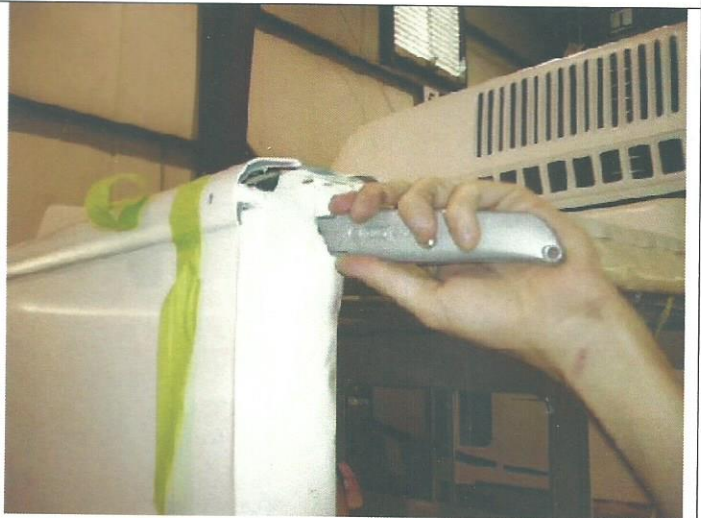
7. Place the triangle seal at the top DS corner of the rear seal (closed side of the seal faced down) and staple it in place with a N10BAB staple gun.

Triangle should be bigger



8. Use a razor knife to cut a small hole through the top ODS corner of the rear seal in order to route the radio antenna wiring through it.

Should not cut hole / route wire differently



9. Retrieve a radio antenna and route the wiring through the hole in the seal. The antenna will mount to the outside of the roof so the ends of the antenna wiring should be routed from the outside of the hole to the inside of the roof.





## **TrailManor Work Procedures**

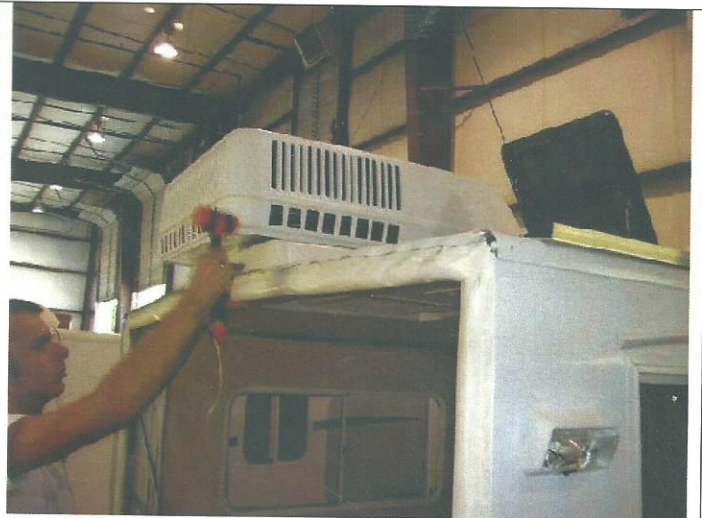
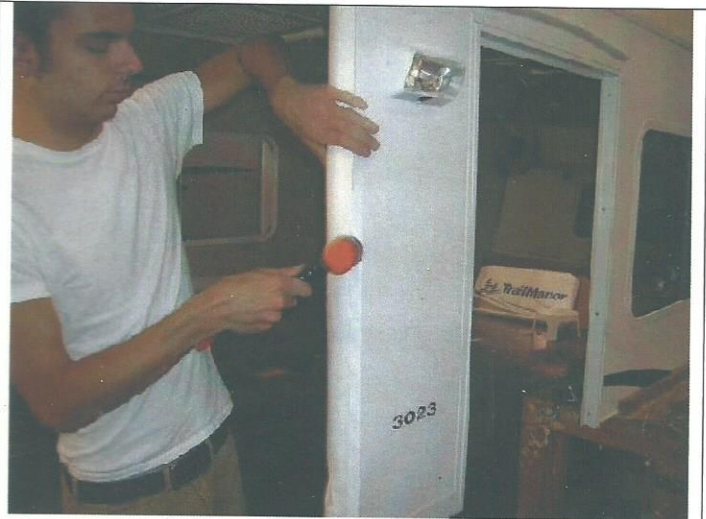
### **Completing the Rear Seal on the Front Roof**

10. Retrieve a second triangle seal (reference step 6). Place the triangle seal at the top ODS corner of the rear seal (closed side of the seal faced down) and staple in place with a **N10BAB staple gun.**

11. Use a rubber mallet to bend the metal sheeting overhang down onto the seal at the rear of the DS wall frame.

12. **Use a rubber mallet to bend the metal sheeting overhang down onto the seal at the top of the roof frame.**

How far down does the metal overhang need to be / It should cover the staples on the seal and the ending edge of the seal

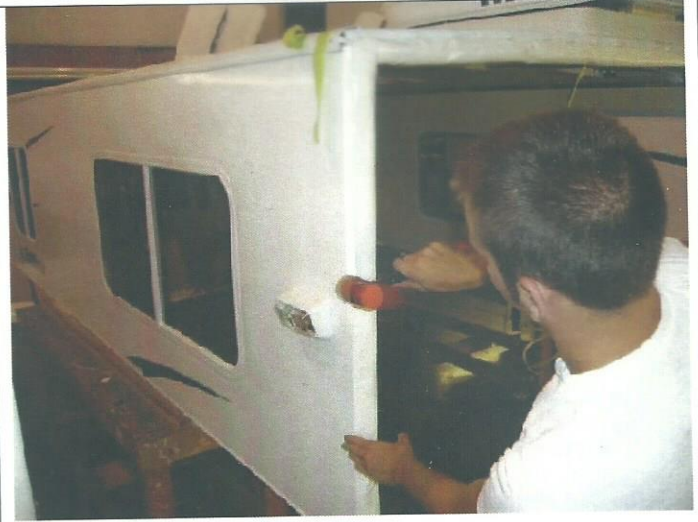




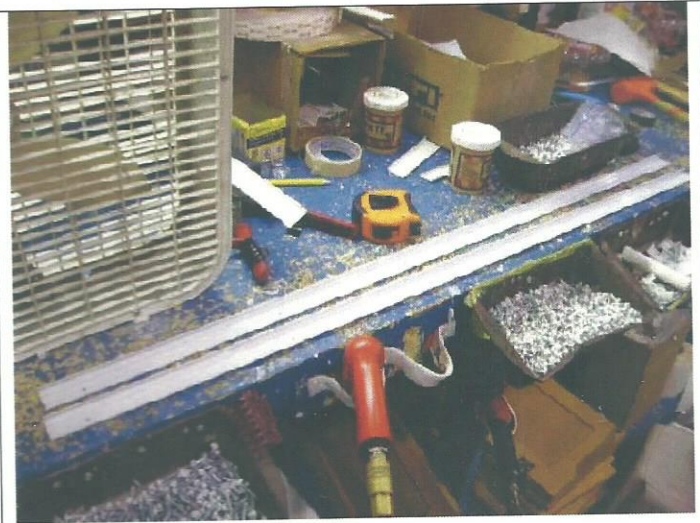
## TrailManor Work Procedures

### Completing the Rear Seal on the Front Roof

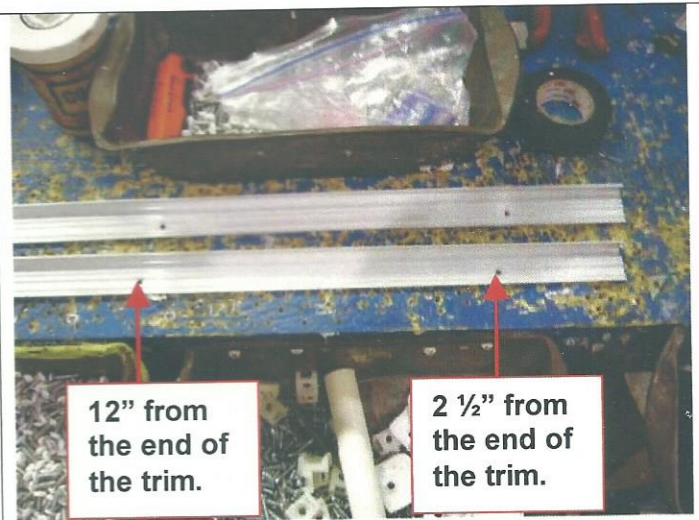
13. Use a rubber mallet to bend the metal sheeting overhang down onto the seal at the rear of the ODS wall frame.



14. Retrieve two 41- $\frac{1}{2}$ " pieces of standard corner trim.



15. Drill a  $\frac{1}{8}$ " hole 2- $\frac{1}{2}$ " in from each end of the trim pieces. Drill a  $\frac{1}{8}$ " hole 12" in from each end of the trim pieces. Drill a  $\frac{1}{8}$ " hole in the center of each piece of trim pieces (20- $\frac{3}{4}$ " from the end of the trim).

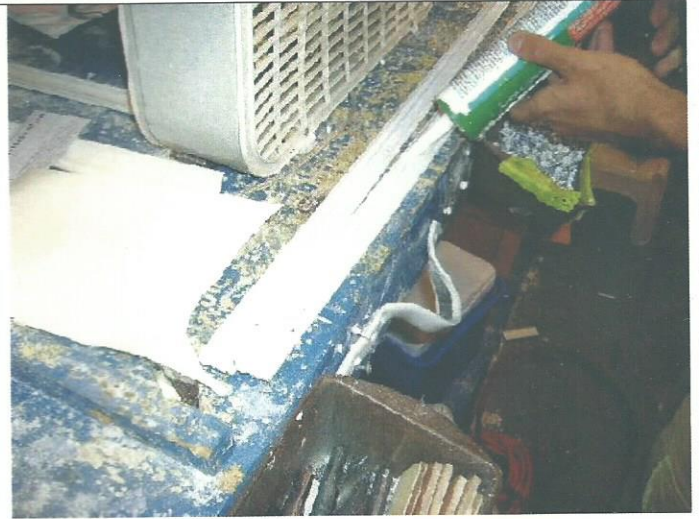




## **TrailManor Work Procedures**

### **Completing the Rear Seal on the Front Roof**

- 16.** Run a bead of clear silicone along the inside corner of the trim pieces. This has changed to butyl tape. Need to revise procedure.



- 17.** Place one 41-1/2" piece of the trim on the outside edge of the DS wall with the bottom end of the trim flush with the bottom of the side wall frame. Attach the trim to the end of the side wall frame with 1" white pan head screws.



- 18.** Place one 41-1/2" piece of the trim on the outside edge of the ODS wall with the bottom end of the trim flush with the bottom of the side wall frame. Attach the trim to the end of the side wall frame with 1" white pan head screws.





## TrailManor Work Procedures

### Completing the Rear Seal on the Front Roof

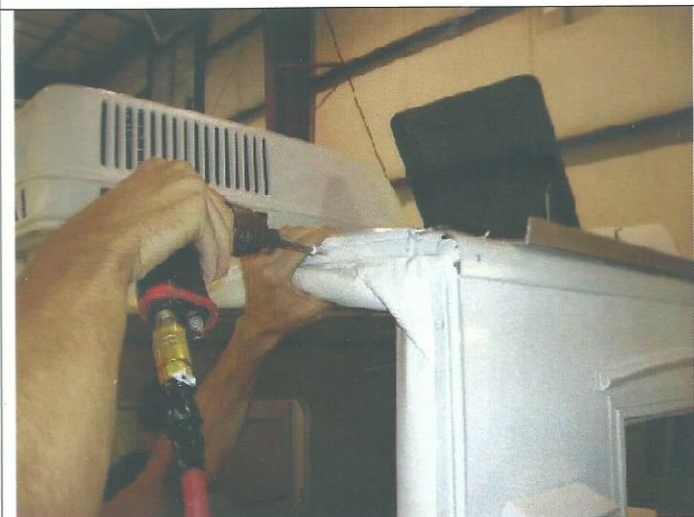
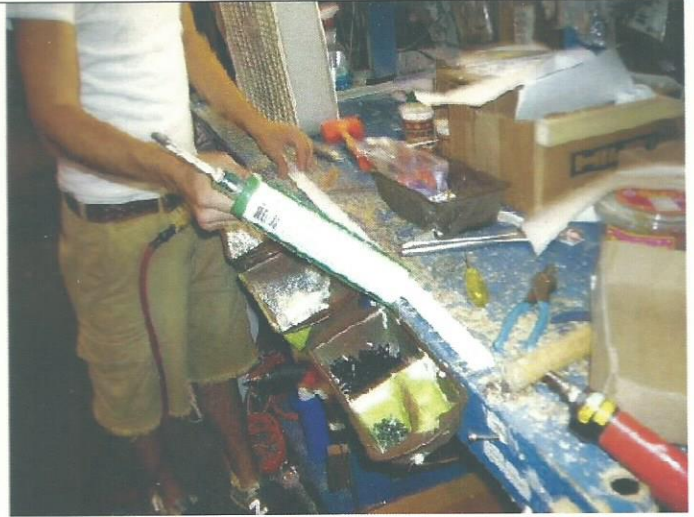
19. Retrieve an 87" piece of standard corner trim. Drill a 1/8" hole 4" in from each end of the trim piece and drill a 1/8" hole at about 15" intervals along the rest of the piece.

This has changed to butyl tape. Need to revise procedure.

20. Run a bead of clear silicone along the inside corner of the trim pieces.

21. Place the 87" piece of the trim on the top outside edge of the roof with the DS end of the trim flush with the inside of the radius cap on the DS side wall.

22. Attach the trim to the roof frame with 1" white pan head screws at the pre-drilled holes on the trim.



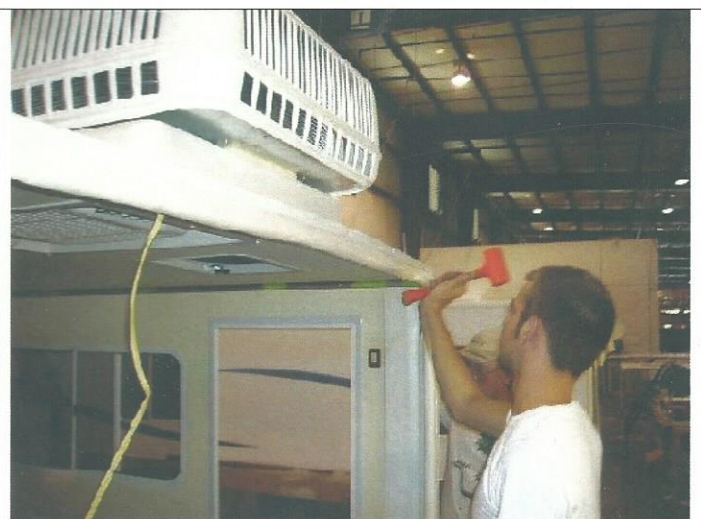
## ***TrailManor Work Procedures***

### ***Completing the Rear Seal on the Front Roof***

- 23.** Bend the trim down flush with the roof frame as the screws are attached.

The ODS end of the 87" piece of trim should end at the radius cap on the ODS wall.

- 24.** Use a rubber mallet to flush the trim to the roof as needed after all screws have been attached.





## ***TrailManor Work Procedures***

### ***Completing the Rear Seal on the Front Roof***

**25.** Retrieve two top caps and run a bead of clear silicone along the inside edge of both caps.



**26.** Attach the top caps to the top DS and ODS rear corners of the roof with 1" white pan head screws in the pre-drilled holes on the caps.



**27.** Use 94 primer on a paper towel to prime the 15" space between the first and second screw on the top ODS piece of trim.

